

## WHAT MAINTENANCE DO SMOKE DETECTORS NEED?

It's extremely important to test and clean all detectors regularly.

Replace the batteries according to the manufacturer's recommendations—or at least once a year. Warn everyone in your household to leave working batteries in smoke detectors—resist the temptation to borrow them for other purposes.

Never paint a smoke detector. Because cobwebs and dust can impair a detector's sensitivity, vacuum your detectors at least once a year.

Follow the manufacturer's instructions for testing your smoke detectors. It only takes a moment to test a smoke detector that could save your life; test yours once a week to make sure you're protected.

## WHAT HAPPENS WHEN THE FIRE ALARM SOUNDS?

Being awakened by a smoke detector can be very scary and disorienting. You'll do the right thing if you've planned for a fire emergency before it happens.

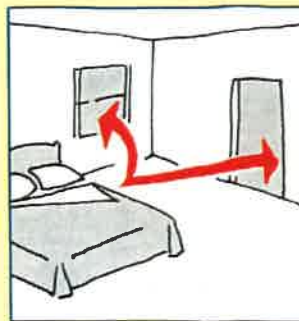
First of all, make sure everyone knows what your smoke detector sounds like.

Escape planning is a must. Plan at least two ways out from each room—especially the bedrooms. Set a place to meet outside

the house so you'll know when everyone is out.

Have everyone rehearse the plan regularly.

In case of a real fire, get out of the house immediately. Once at the meeting place, have one person go to a neighbor's phone to call the fire department. In addition to telling them your name and address, tell them if anyone is still in the house.



## FIRESAFETY IN YOUR HOME STARTS TODAY!

In combination with a family escape plan, smoke detectors properly installed and maintained can save your family's lives in case of fire.

**Smoke detectors—big protection for a small price!**



People protecting people since 1896.  
© 1988 National Fire Protection Association  
Batterymarch Park, Quincy, MA 02269

Printed in U.S.A. BR-4

# SMOKE DETECTORS—FIRESAFETY WHILE YOU SLEEP



## DO SMOKE DETECTORS REALLY SAVE LIVES?

Most fatal home fires occur at night, while people are asleep. Poisonous gases and smoke from a fire in your home can numb the senses in a very short time.

Every home needs a device that can wake people up in time to escape from a fire.

Almost every day, a smoke detector saves somebody's life. That's why some 33 states have laws requiring smoke detectors in all new homes.

Of all the low-cost fire alarm devices you can buy, fire officials consider smoke detectors the most effective.

## HOW DO I CHOOSE A SMOKE DETECTOR?

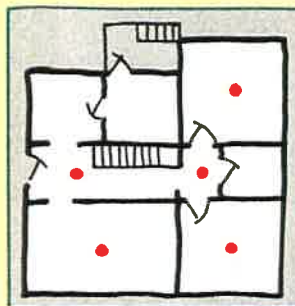
Dozens of reputable brands of smoke detectors are readily available. No matter where you buy your detectors or what type they are, be sure to buy only "labeled" units—those bearing the mark of an organization that tests and evaluates products.

Any labeled smoke detector offers protection—whether it's powered by batteries or household current, whether it's a photoelectric or ionization device.



But to get the protection you paid for, it's vital that you follow the manufacturer's recommendations for installation, testing and maintenance.

## HOW MANY DO I NEED?



According to the widely accepted Standard on Household Fire Warning Equipment (NFPA 74), minimum protection requires smoke detectors outside each bedroom and on each additional story of the house—including the basement.

For extra protection, NFPA recommends that you also install detectors inside each bedroom, the dining room, furnace room, utility room and hallways. If your family sleeps with bedroom doors closed, it's especially important to install detectors inside the bedrooms. Detectors are also recommended for kitchens, attics (finished or unfinished) and garages. Be sure you can hear detectors from each bedroom.

## WHERE AND HOW SHOULD I INSTALL MY SMOKE DETECTORS?

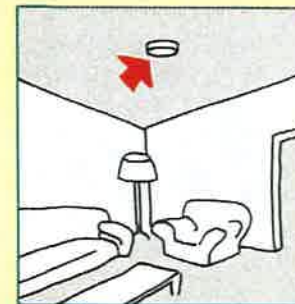
To install most smoke detectors, all you need is a screwdriver and a drill.

Most smoke detectors operate either on batteries or household current. A detector that plugs into a wall outlet must have a re-

straining device so that the plug cannot accidentally be pulled from the wall. Detectors can also be hard-wired into the electrical system. But never hard-wire a detector to a circuit that can be turned off at a wall switch.

Because smoke rises, each detector should be mounted high on a wall or on the ceiling to detect the first traces of smoke. For a wall-mounted unit, the top of the detector should be 4 to 12 inches from the ceiling. A ceiling-mounted detector should be placed at least 4 inches from any wall. In a room with a high pitched ceiling, mount the detector on or near the ceiling's highest point.

Most home fires start in living areas—the den, family room or living room. On a floor with no bedrooms, install the required detector in or near the living area. If a stairway leads to an upper story, install the detector in the path where smoke would travel up the stairs.



Don't install a detector near a window, door or air register where drafts could reduce its sensitivity.

Locate a basement smoke detector close to the stairway leading to the floor above. But don't install the detector at the top of the basement stairs: dead air space near the door may prevent smoke from reaching the detector.